

Available For Sale

**Pageland Highway
Monroe NC**



\$75,000

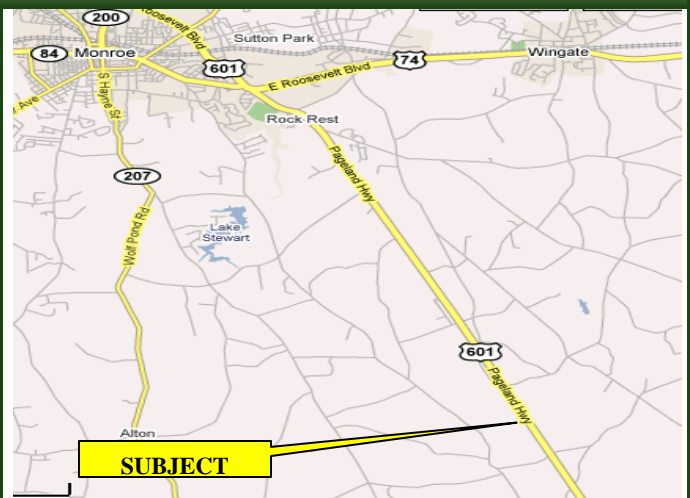
3.03 Acres

www.themosergroupinc.com

Property Highlights

Parcel Map

- Conveniently Located on Pageland Hwy. (US Hwy. 601) 7 Miles Southeast of Monroe
- Hwy. 601 is Currently Being Four-Laned at Subject Property
- Zoned RA-40
- Traffic Count: US Hwy. 601 = 12,000 cpd (NCDOT2006)
- Parcel ID #: 04-012-001

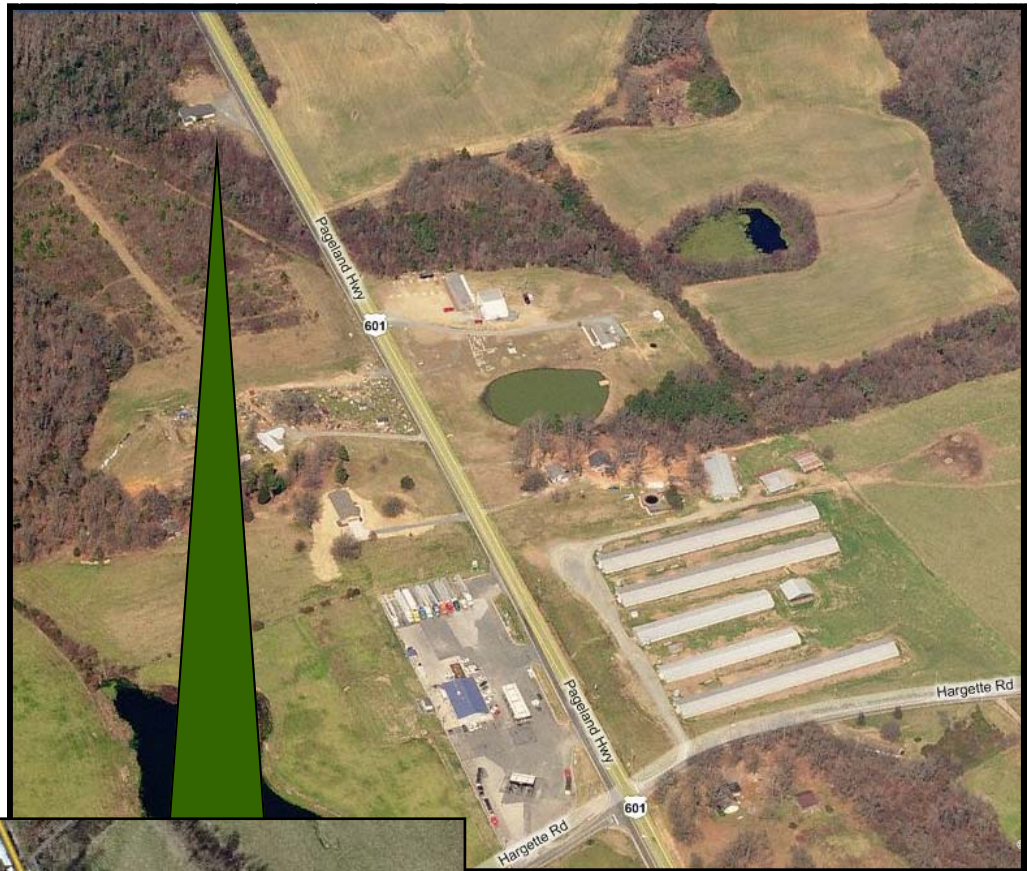


For More Information Contact:
Van Southard, MBA, CCIM, Ext. 224
Katherine Southard, Ext. 231
Bill Morgan, MAI, Ext. 218
(704) 882-1700



THE MOSER GROUP, INC.
COMMERCIAL REAL ESTATE

**3.03
Acres**



**Hwy. 601 is Currently
Being Four-Laned at
Subject Property**

\$75,000

**For More Information Contact:
Van Southard, MBA, CCIM, Ext. 224
Katherine Southard, Ext. 231
Bill Morgan, MAI, Ext. 218
(704) 882-1700**

THE MOSER GROUP, INC.
COMMERCIAL REAL ESTATE

The information above has been obtained from sources we believe to be reliable, however we cannot accept responsibility for its accuracy. * Owner/Broker Property