

Available For Sale

Reid Dairy Road
Weddington, NC 28104



+/- 11.2 Acres

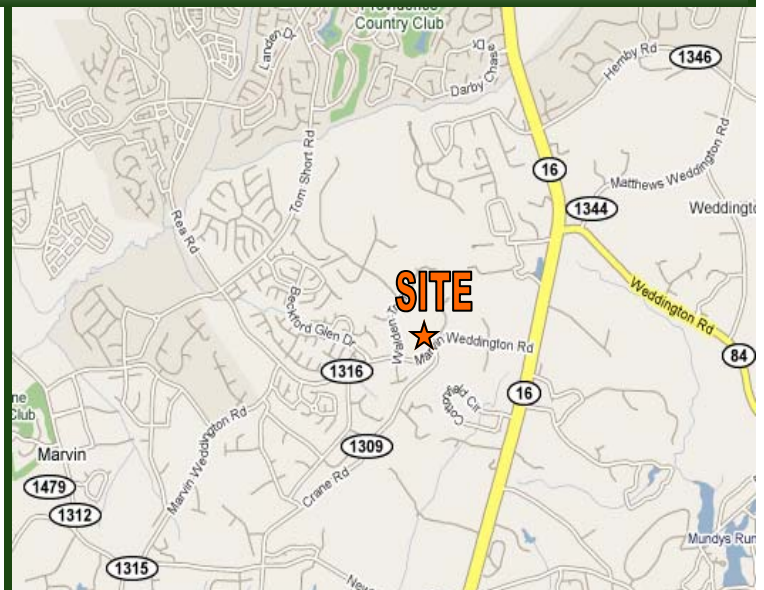
**\$175,000
Per Acre**

www.themosergroupinc.com

Property Highlights

- **Highly Sought After Weddington, NC Location (Rea Road)**
- **Ideal Sight For A Day Care (Property Connected to Reaview School, Traffic Light for Easy Access)**
- **Water and Gas Connection at Sight**
- **Owner Will Subdivide**
- **Great Visibility From Rea Road**
- **Parcel ID #'s: 06-177-010 & 06-177-015**

Location Map



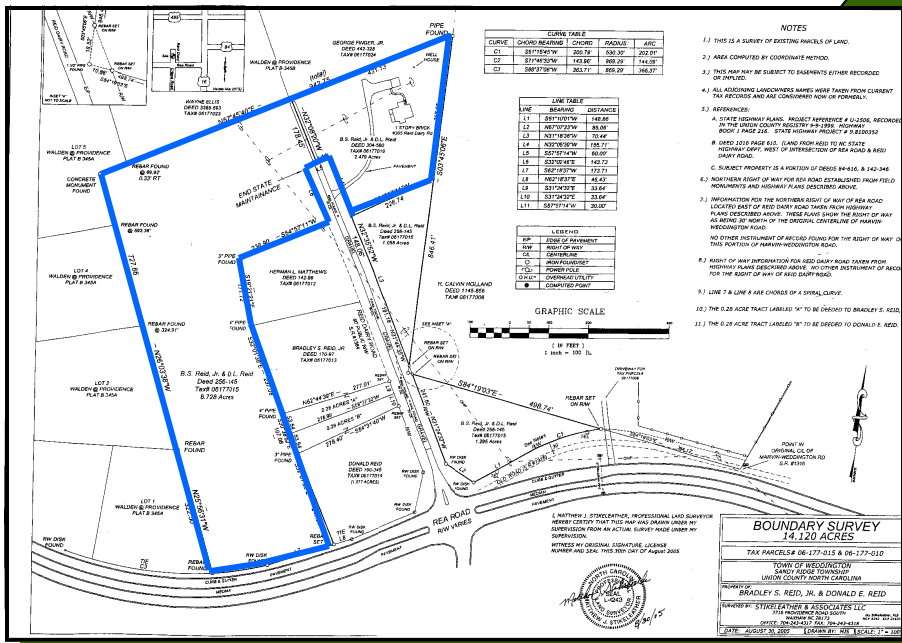
Please contact:
Dennis Taylor
(704) 905-4820

dtaylor@themosergroupinc.com



THE MOSER GROUP, INC.
COMMERCIAL REAL ESTATE

**+/- 11.2
Acres**



**\$175,000
Per Acre**

Demographics (2008)	Three Mile	Five Miles	Ten Miles
Population:	36,964	92,097	322,328
Proj. Growth Rate ('08-'13)	5.77%	5.15%	4.02%
Avg. HH Income:	\$158,741	\$149,111	\$115,590

**Please contact:
Dennis Taylor
(704) 905-4820
dtaylor@themosergroupinc.com**



The information above has been obtained from sources we believe to be reliable, however we cannot accept responsibility for its accuracy.