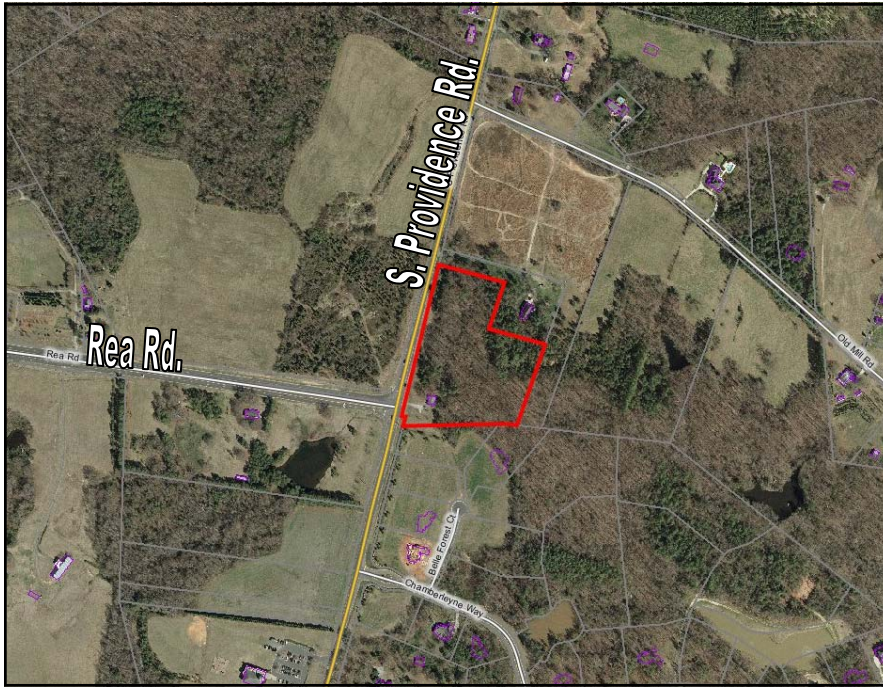


Available For Sale

**S. Providence Road
Weddington, NC 28104**



+/- 8.26 Acres

\$300,000

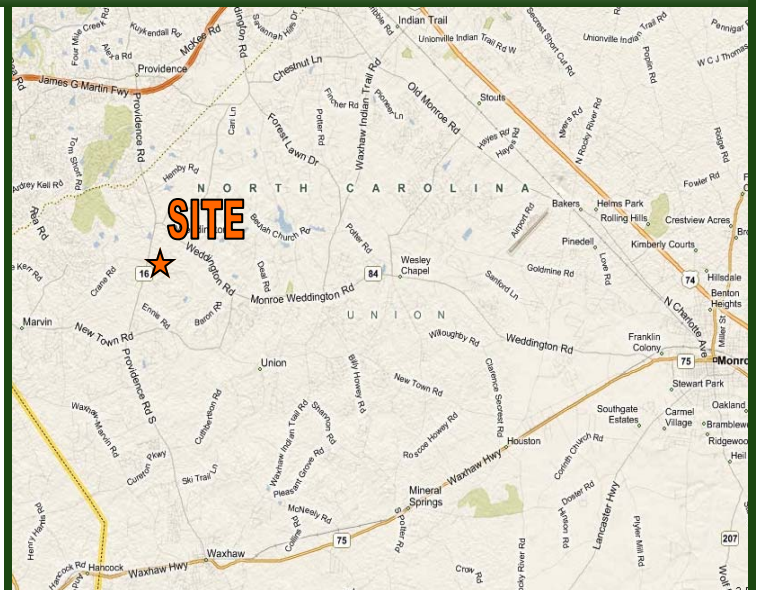
Per Acre

www.themosergroupinc.com

Property Highlights

Location Map

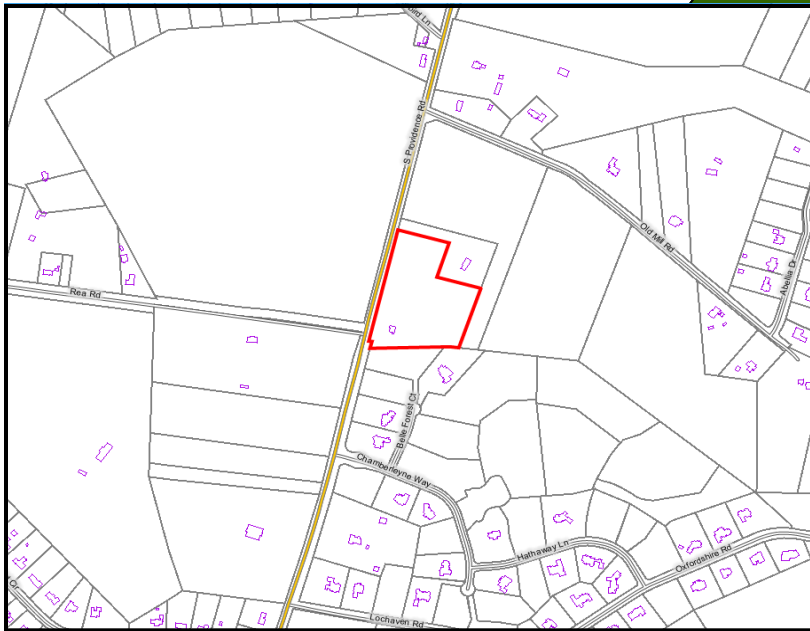
- **Highly Sought After Weddington, NC Location (Rea Road)**
- **Located At The Intersection of S. Providence Rd. and Rea Rd., At The Corner of The Proposed Rea Rd. Extension**
- **Great Visibility From Providence Road**
- **Parcel ID #'s: 06153008**



Please contact:
Dennis Taylor
(704) 905-4820
dtaylor@themosergroupinc.com

THE MOSER GROUP, INC.
COMMERCIAL REAL ESTATE

**+/- 8.26
Acres**



**\$300,000
Per Acre**

Demographics (2008)	Three Mile	Five Miles	Ten Miles
Population:	25,472	85,596	323,644
Proj. Growth Rate ('08-'13)	5.78%	5.32%	4.14%
Avg. HH Income:	\$164,532	\$151,460	\$115,129

**Please contact:
Dennis Taylor
(704) 905-4820
dtaylor@themosergroupinc.com**



The information above has been obtained from sources we believe to be reliable, however we cannot accept responsibility for its accuracy.