

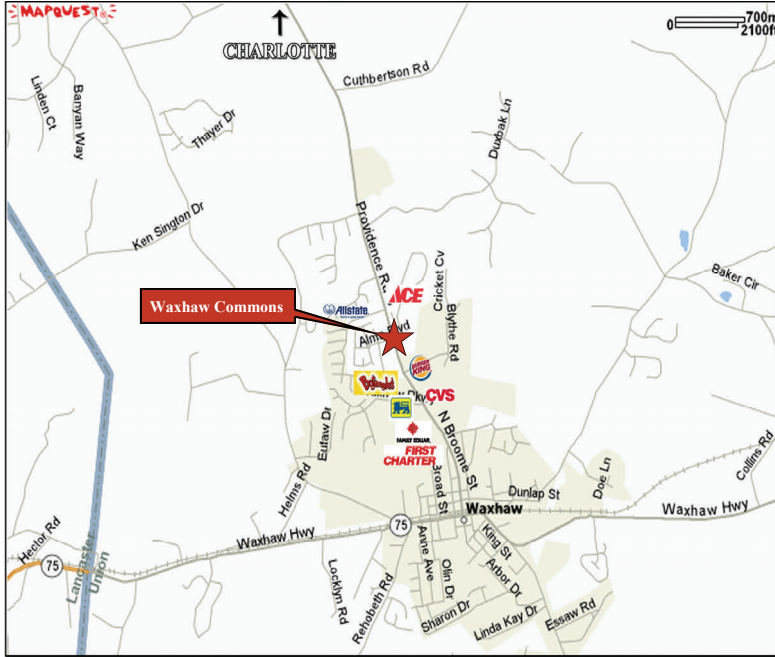
Available For Sale

Waxhaw Commons

Providence Road South & Alma Boulevard
Waxhaw, NC 28173



Office / Retail Outparcels



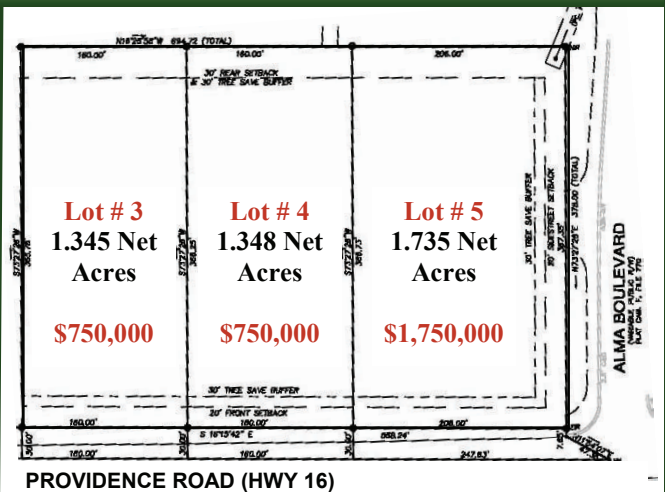
Lot	Acres	Price
#3	1.345 Net	\$750,000
#4	1.348 Net	\$750,000
#5	1.735 Net	\$1,750,000

www.themosergroupinc.com

Property Highlights

- High Visibility on Highway 16 (Providence Road)
- Great Location with a Direct Route to Charlotte
- Nearby Tenants Include State Employees Credit Union, Wesley Chapel Child Development Center & More!
- Three Lots Available - Lot #3: 1.345 Acres, Lot #4: 1.348 Acres, Lot #5 (Corner): 1.735 Acres
- * Owner / Broker Property

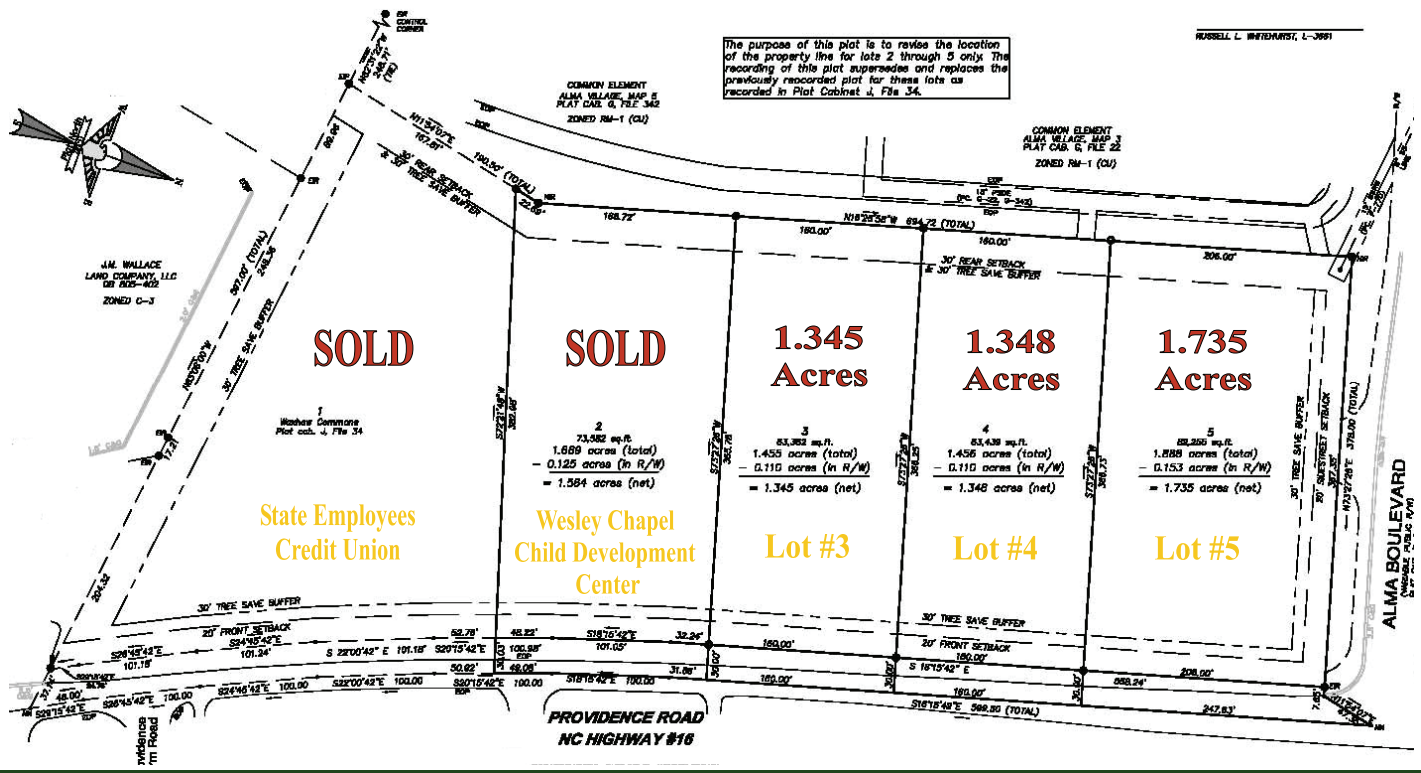
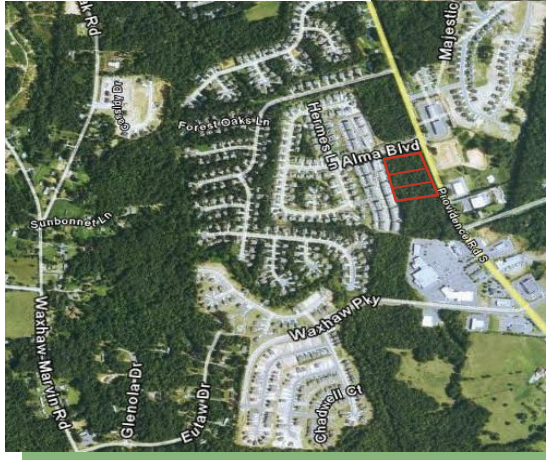
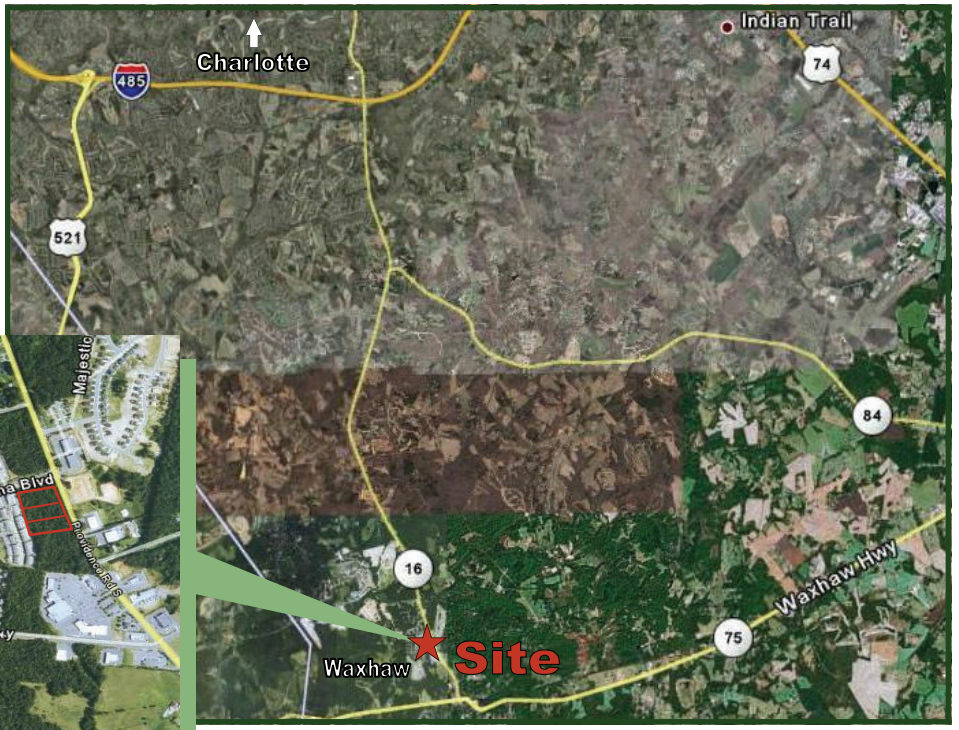
Site Plan



Please contact:
Van Southard, CCIM ext. 224
Dennis Moser, MAI ext. 211
(704) 882-1700



THE MOSER GROUP, INC.
COMMERCIAL REAL ESTATE



Please contact:
 Van Southard, MBA, CCIM ext. 224
vsouthard@themosergroupinc.com
 Katherine Southard, MBA ext 231
ksouthard@themosergroupinc.com
 (704) 882-1700



New image of State Employees Credit Union!!!



Wesley Chapel

Child Development Center

Please contact:

Van Southard, MBA, CCIM ext. 224
vsouthard@themosergroupinc.com
Katherine Southard, MBA ext 231
ksouthard@themosergroupinc.com
(704) 882-1700



The information above has been obtained from sources we believe to be reliable, however we cannot accept responsibility for its accuracy.