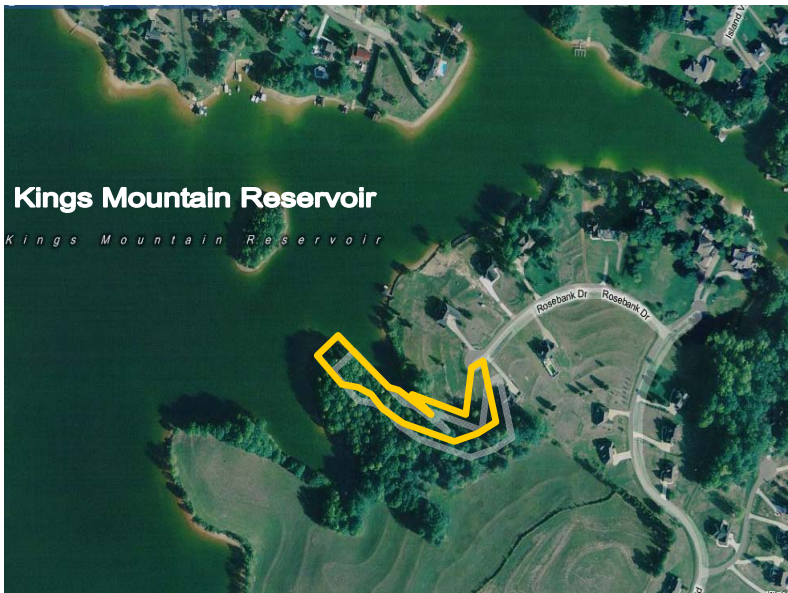


# Available For Sale

## Waterfront Residential Site

**Moss Lake**  
**119 Rosebank Drive**  
**Shelby NC 28150**

**Best Vacant  
Lot Remaining  
on Lake!**



**+/-1.52 Acres**

**Peninsula Lot**

**\$350,000**

**Prime Residential Site**

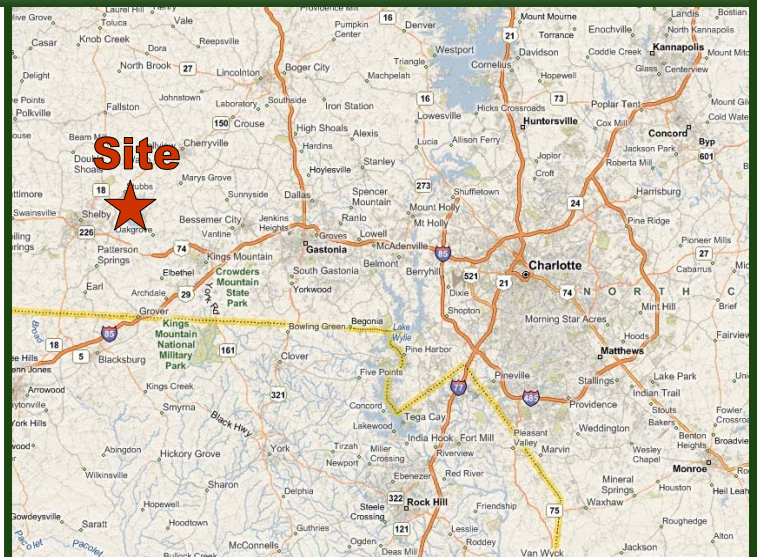
[www.themosergroupinc.com](http://www.themosergroupinc.com)

### Property Highlights

- Peninsula Lot - One Of The Last Wooded Lots on Kings Mountain Reservoir- Moss Lake
- Great Location With Easy Access to Hwy. 74, I-485, I-85, Charlotte, Gastonia and Greenville
- Located on a Cul-De-Sac With Excellent Lake Frontage
- The Best Vacant Lot Remaining On Lake
- Septic System Approved By County
- Parcel ID #: 46155
- Owner Financing Available

\* Note: Listing Broker is Owner of Property

### Location Map

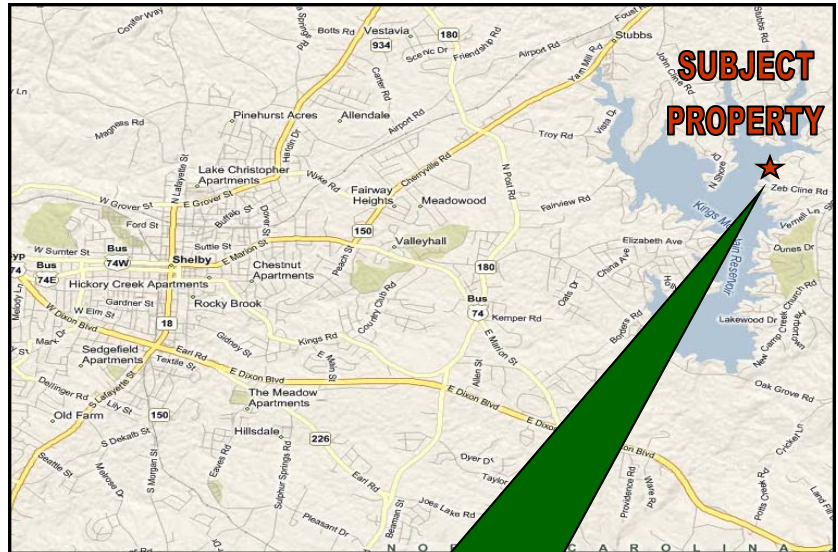


For more information contact:  
**Dennis W. Moser, MAI**  
**704-882-1700 x 211**  
[dmoser@themosergroupinc.com](mailto:dmoser@themosergroupinc.com)

**THE MOSER GROUP, INC.**  
COMMERCIAL REAL ESTATE

**+/-1.52  
Acres**

**\$350,000**



## Prime Peninsula Waterfront Site

For more information contact:  
**Dennis W. Moser, MAI**  
704-882-1700 x 211  
dmoser@themosergroupinc.com



**THE MOSER GROUP, INC.**  
COMMERCIAL REAL ESTATE

The information contained herein is believed to be accurate, but is not guaranteed and may change or be updated without notice. \* Co-Owner Property