

Available For Sale

Beulah Church Road
Weddington, NC 28104



Tract 1 +/-2.5 Acres
\$150,000

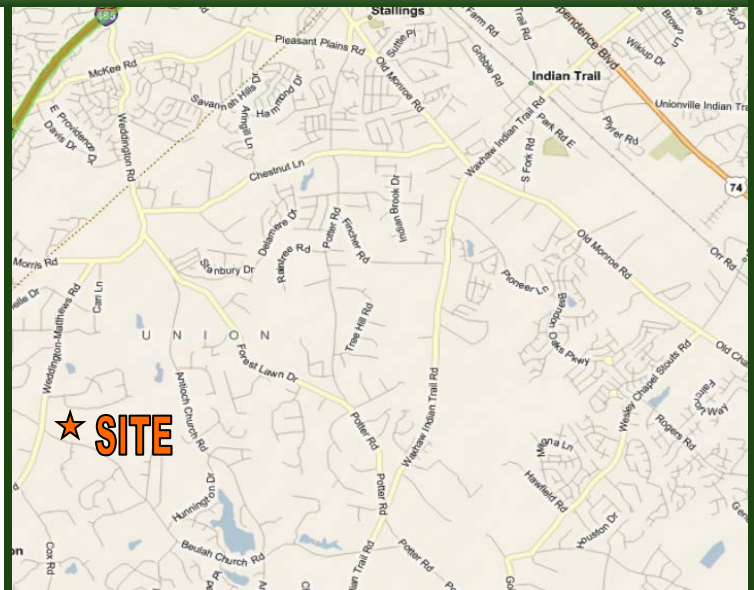
Tract 2 +/- 2.5 Acres
\$180,000

www.themosergroupinc.com

Property Highlights

Parcel Map

- ✓ Excellent Location At Beulah Church Rd. And Weddington-Matthews Rd.
- ✓ Two Tracts For Residential Building Zoned R40
- ✓ Both Lots Perk For Two Or More Houses
- ✓ Both Lots - 330' Frontage on Beulah Church Rd.
- ✓ Parcel ID #'s: Part of 06120020

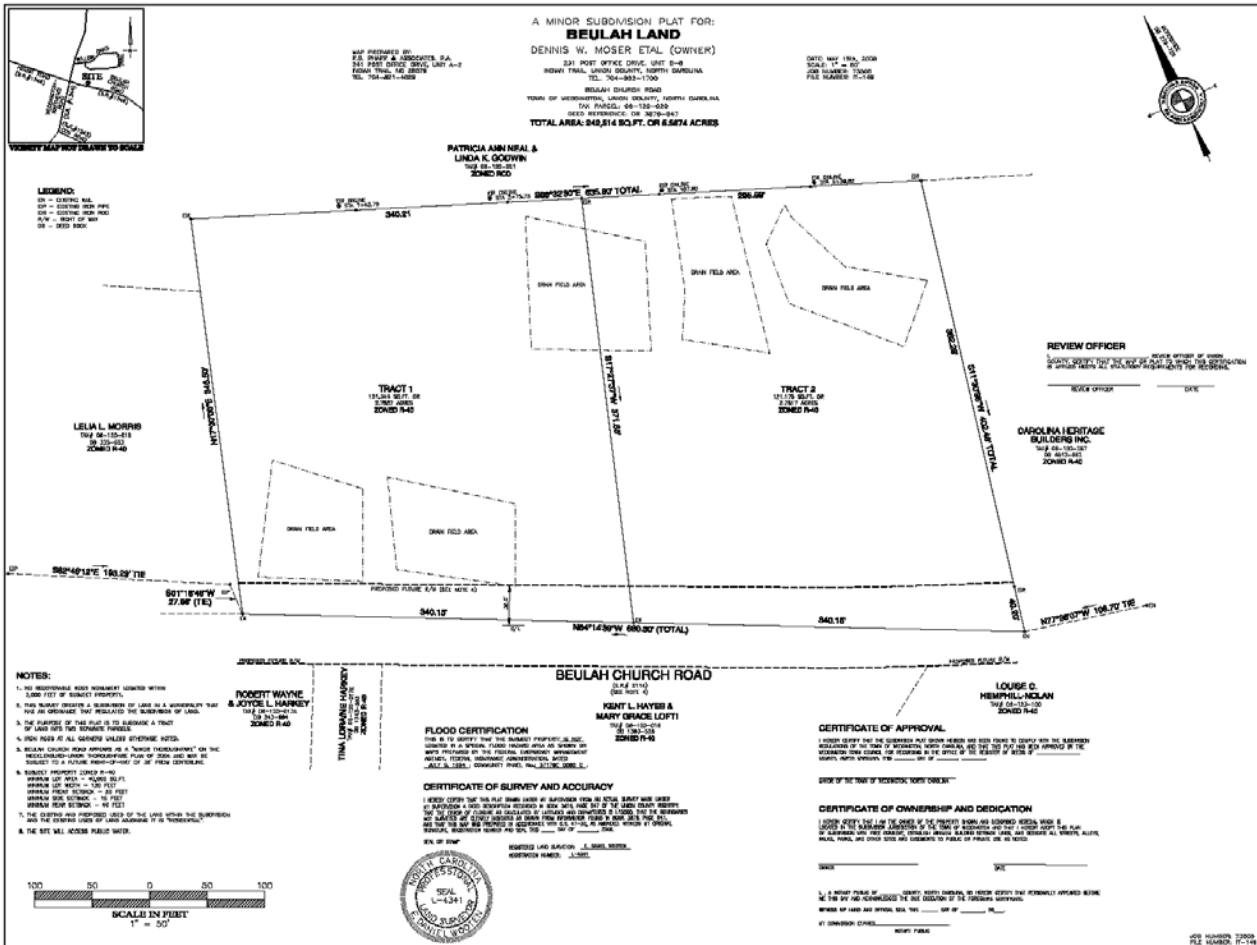


Please contact:
Dennis W. Moser, MAI ext. 211
(704) 882-1700
dmoser@themosergroupinc.com

THE MOSER GROUP, INC.
COMMERCIAL REAL ESTATE

**MAKE
OFFER!**

Survey



**Tract 1 +/-2.5 Acres
\$150,000**

**Tract 2 +/- 2.5 Acres
\$180,000**

Please contact:
Dennis W. Moser, MAI ext. 211
(704) 882-1700
dmoser@themosergroupinc.com



The information above has been obtained from sources we believe to be reliable, however we cannot accept responsibility for its accuracy.