

# Available For Sale

## Residential Sites

Pageland 87 Lots

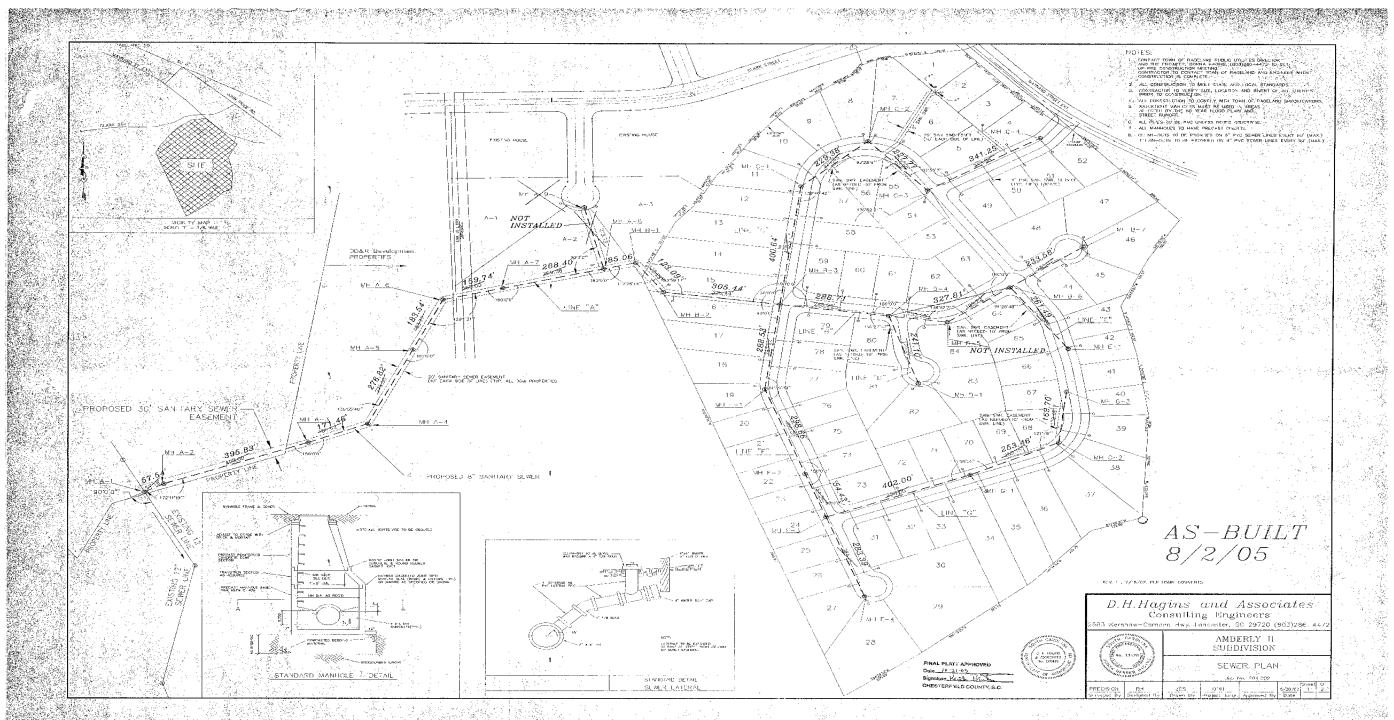


**\$11,207/Lot**  
**87 Lots**

### Property Highlights

- Could build duplexes or quads
- Water and Sewer
- Must bond over for pavement completion.
- Parcel #045-000-000-205, 045-000-000-262, 045-000-000-266, 045-000-000-035, 045-000-000-273

[www.themosergroupinc.com](http://www.themosergroupinc.com)



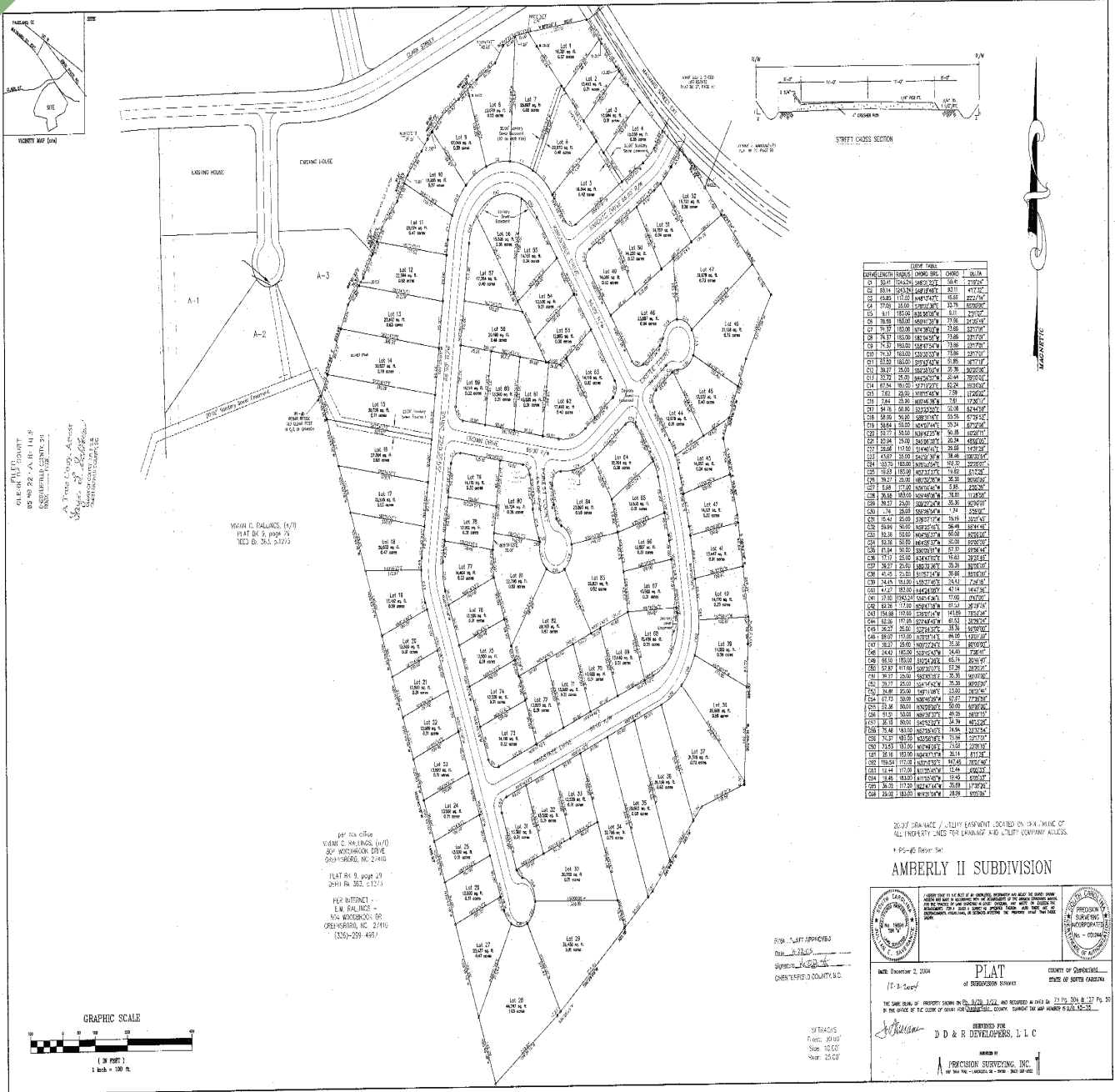
Please contact:

Van Southard, MBA, CCIM ext. 224  
[vsouthard@themosergroupinc.com](mailto:vsouthard@themosergroupinc.com)  
Katherine Southard, MBA ext 231  
[ksouthard@themosergroupinc.com](mailto:ksouthard@themosergroupinc.com)  
(704) 882-1700



**THE MOSER GROUP, INC.**  
COMMERCIAL REAL ESTATE

# \$11,207/ Lot 87 Lots



Please contact:  
**Van Southard, MBA, CCIM ext. 224**  
 vsouthard@themosergroupinc.com  
**Katherine Southard, MBA ext 231**  
 ksouthard@themosergroupinc.com  
 (704) 882-1700



The information above has been obtained from sources we believe to be reliable, however we cannot accept responsibility for its accuracy. \*